



A share main board listed company
Stock Code:605318



OFFICIAL WEBSITE



ALIBABA SITES

FSILON HOME BUILDING MATERIALS CO.,LTD.

No.5888,Wuyuan Road,Haiyan County, Jiaxing City,Zhejiang Province, China

860573-86598806

[http:// fsl-bm.com](http://fsl-bm.com)

sales@fsilon.com



**Fsilon Light Steel House /
Triangle House Product**

ABOUT US

Fsilon has been deeply rooted in the home building materials industry since its founding in 2005. With two decades of expertise, the company proudly debuted on the Shanghai Stock Exchange A-share Main Board (Stock Code: 605318) in August 2020. As a pioneer and leader in the industry, Fsilon is an eco system-driven industrial enterprise integrating product R&D, supply chain empowerment, personalized customization, and turnkey project delivery.

Headquartered in Haiyan, Zhejiang, the company operates across a 260,000+ sqm campus, with its business spanning diverse sectors such as: Cultural tourism facilities, Public welfare projects, Mobile commercial solutions, Municipal infrastructure, Rural revitalization, Military, medical, and beyond. Through independent innovation, Fsilon has introduced cutting-edge, highly customizable products, including: All-terrain adaptable "Space Capsule" and "Apple Capsule" units Modular prefabricated buildings.

Empowered by professional excellence and innovative spirit, Fsilon fuels dynamic growth across industries.



DRIVEN BY INNOVATION PRODUCT UPGRADES DOUBLE IN VALUE

From manufacturing to intelligent manufacturing, Fsilon has been practicing the development concept of "innovation" all the way, providing core protection for the long-term prosperity of the enterprise.



Type:Utility model patent
Code: ZL 2018 2 0672567



Type:Utility model patent
Code:ZL 2016 10078197.X



Type:Utility model patent
Code: ZL 2018 2 0680433.X



Type:Utility model patent
Code:ZL 2018 2 0216448.0



Type:Design Patent
Code:ZL 2018 3 0194369.X



Type:Design Patent
Code:ZL 2018 3 0160744.9



Type:Design Patent
Code:ZL 2018 3 0161029.7



Type:Design Patent
Code: ZL 2018 3 0160743.4



Type:Design Patent
Code:ZL 2018 3 0161027.8



Type:Design Patent
Code:ZL 2018 3 0194508.9



Type:Design Patent
Code:ZL 2018 3 0194550.0



Type:Design Patent
Code:ZL 2018 3 0194531.8



Type:Design Patent
Code: ZL 2018 3 0194383.X



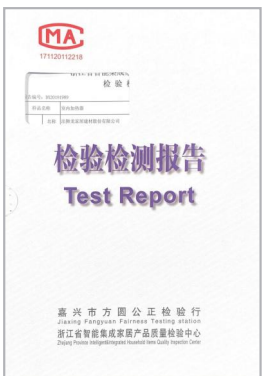
Type:Design Patent
Code:ZL 2018 3 0194561.9



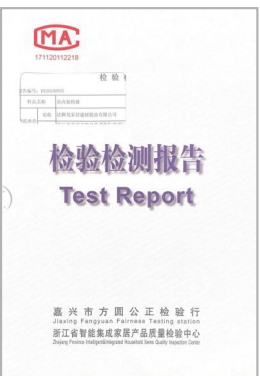
Type:Design Patent
Code:ZL 2018 3 0194304.5

PREMIUM PRODUCTS

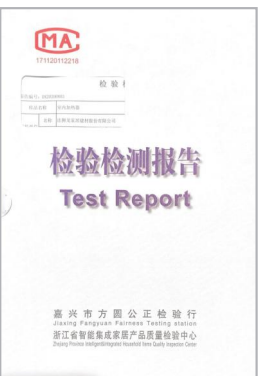
Define industry-leading standards and forge a quality FSILON



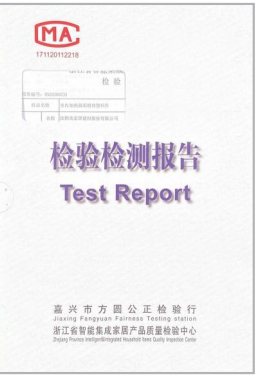
Report NO.DX20191989



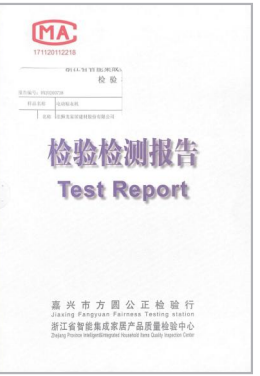
Report NO.DX20200935



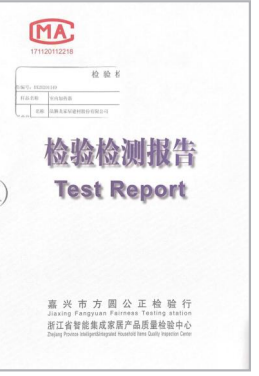
Report NO.DX20200803



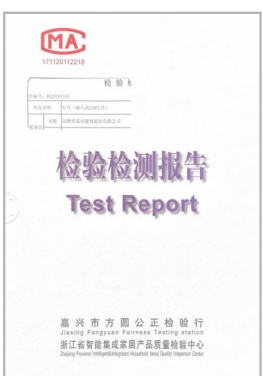
Report NO.DX20200235



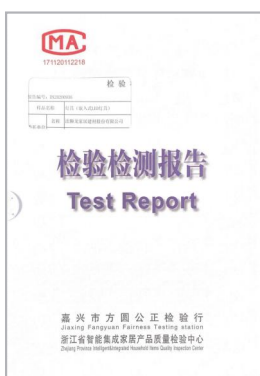
Report NO.DX20200738



Report NO.DX20201149



Report NO.DX20201153



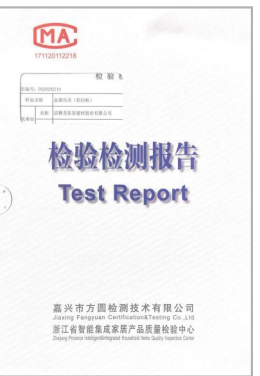
Report NO.DX20200936



Report NO.WTN2020-0813



Report NO.DX20200236



Report NO.DX20202210



Report NO.DX20200621

Fsilon has the strength of a first-line brand in the industry, far surpassing many brands in the industry in terms of product research and development, design, and manufacturing levels. Driven by technological innovation and focusing on improving the "internal strength" of products, the spirit of craftsmanship and the pursuit of excellence in quality are reflected in every detail, from the selection of auxiliary materials, manufacturing processes, power optimization to product performance.

CATALOGUE

Fsilon Make Space Smarter

Provide Prefabricated Materials and Modular Solutions

Driven by the dual forces of global carbon neutrality goals and consumption upgrading, the construction industry is undergoing a transformation from "reinforced concrete" to "green and smart." As two innovative forms, light steel houses and triangle houses are gaining market traction—the former through industrialized assembly and the latter through aesthetic appeal.

As versatile and portable auxiliary housing units, light steel houses/triangle houses combine the advantages of modular construction, offering not only easy installation and eco-friendliness but also the ability to create diverse emotional spaces. They meet needs such as living and working while infusing sensuality and delivering a heightened sense of value.



High-efficiency and practical accessory dwelling units -
Light steel houses,



a geometric aesthetic interpretation of living -
Triangular houses



Building Dreams for the Future · Reconstructing a New Habitat Ecosystem The Symbiosis of Nature and Technology

Amidst the concrete jungle, light steel houses stand with graceful poise, carrying people's aspirations for an ideal dwelling. Like an interpreter between nature and industrial civilization, they embrace the earth with soft contours. Clad in eco-friendly materials, their exteriors mute the urban clamor while welcoming the free flow of sunlight and air. Here, architecture sheds its cold, barrier-like existence, transforming into a poetic coexistence with nature.



Light Steel Dreams: The New Wave of Green Architecture in Market Trends

As urbanization accelerates and construction demands continue to rise, light steel houses are expanding their applications across various sectors, including residential, commercial, office spaces, tourism resorts, and senior living. Particularly in new urbanization and rural revitalization initiatives, light steel structures have become a key solution for diverse architectural needs due to their unique advantages.

Moreover, with their elegant aesthetics, cost-effectiveness, and rapid construction, they are gradually transitioning from temporary structures to permanent buildings.

Adhering to the principle of "top-tier products, premium quality, and exceptional service," Fsilon actively promotes the use of light steel houses in infrastructure, residential projects, and temporary constructions. The company supplies lightweight, earthquake-resistant, energy-efficient, and eco-friendly steel structures to multiple countries, delivering both speed and sustainability in modern building solutions.



The "Lego Philosophy" in Architecture: Prefabricated Light Steel Buildings Weave a New Vision of Green Living

The entire wall system employs negative oxygen ion release technology, with a release capacity of 3,000+ ions per cubic centimeter. The whole-house sound insulation coefficient reaches 65 dB, and the integrated fresh air system ensures a continuous supply of fresh air.

Highly Standardized and Modular Design

Fsilon light steel houses utilize prefabricated light steel materials, achieving convenient installation and uniform construction through prefabricated components, modular assembly, and integrated design, thereby minimizing on-site errors.

Lightweight and Easy to Transport

Light steel components weigh only 1/5 to 1/3 of traditional brick-and-concrete structures, reducing transportation and hoisting costs. Standardized components can be disassembled for transport, making them suitable for remote or hard-to-access construction sites.

Detachable and Reusable

Fsilon light steel houses allow for spatial expansion or functional adjustments by adding or removing modules, adapting to future usage needs. With a steel recycling rate exceeding 90%, the structures can be dismantled and rebuilt elsewhere or the materials can be recycled, aligning with sustainable development principles.

The Dual Awakening of Intelligence and Humanity

Fsilon light steel houses incorporate a whole-house smart system, including intelligent lighting, temperature control, fresh air system, and humidity management, offering a cutting-edge technological experience while enhancing living comfort.



Rediscover Life in a New Light Multi-Scenario Applications for Effortless Living A Fresh Take on Accommodation with Light Steel Homes

Reverence for Nature · Dedication to Quality · Passion for Life

Light steel homes—

Where technical precision meets humanistic warmth. Guarding the soul of home with steel's resilience, Answering the call of our times with innovation.

More than a revolution in materials, It's a manifesto for democratizing space—

Freeing exceptional architecture from the constraints of time, Letting it grow unrestrained between earth and sky.

From Countryside to Metropolis, from Residences to CommercePioneering a New Era in Architecture

In the Serene Rural Landscapes

With its lightweight elegance, it blends seamlessly into nature—
Preserving the rustic charm and tranquility of the countryside,While
delivering modern comfort and convenience.

At the Edge of Bustling Cities

With rapid construction and eco-friendly efficiency, It becomes an
urban sanctuary—A retreat from the chaos, a haven for the soul.

In Tourist Destinations and Resorts

With distinctive designs, superior seismic resilience,
And easy disassembly and reconfiguration—
It stands as the premier choice for luxury lodges, boutique hotels,
And unique vacation retreats.

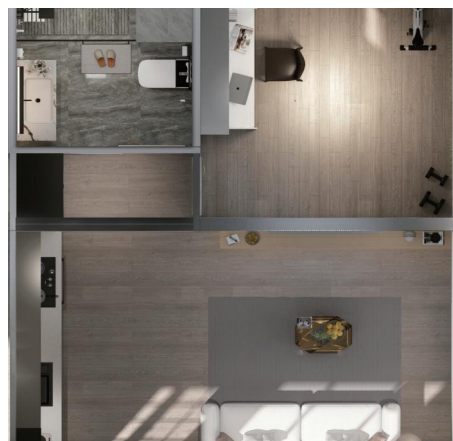
In the Realm of Commercial Spaces

From creative studios and art galleries
To cozy cafes and specialty stores—

Where Wilderness Meets City Lights Steel Framing Life's Poetry

—Rooted in earth's wisdom
—Forged with urban ingenuity
—Designed for life unfolding





Floor Area: 45 sq.m

specification sheet

[illegible]



房屋面积：75平方米

specification sheet

[illegible]



房屋面积：120平方米

specification sheet

[illegible]



TRIANGLE CABIN



Eco-Triangle Cabin Embracing Nature's Splendor

Breaking free from traditional architectural constraints, the Eco-Triangle Cabin adapts seamlessly to diverse landscapes—perched by mountain lakes, nestled in forest clearings, or resting on open meadows. Its innovative design and masterful craftsmanship harmonize with nature's beauty, offering a serene retreat from the bustle of modern life. Here, everyday living blossoms with poetry and the promise of distant horizons.



Harmonious Coexistence of Nature and Modernity

As urbanization accelerates, humanity's yearning for nature grows ever stronger. We seek a closer, more harmonious symbiosis with the natural world.

The triangular cabin represents more than just an innovative architectural form. Drawing inspiration from nature itself, it uses the triangle as its fundamental building block to create a distinctive architectural style. Centuries ago, ancient tribes employed similar structures, recognizing this shape's superior resistance to natural disasters like storms and earthquakes.

Today, the triangular cabin has reemerged – no longer merely a primitive shelter, but rather a symbol of balanced coexistence with nature. It stands as a testament to how modern design can honor ecological wisdom while meeting contemporary living needs.



Triangular Cabin: Your Dream Home Where Fashion Meets Function

Breaking free from conventional architectural constraints, the triangular cabin adapts effortlessly to any terrain—perched beside mountain lakes, nestled in forest glades, or resting on open meadows. With its innovative design and masterful craftsmanship, this structure blends seamlessly with nature's beauty, offering a peaceful sanctuary from life's hustle and bustle. Here, everyday living transforms into a poetic escape, filled with endless possibilities.



Minimalist Aesthetics in Harmony with Nature

The triangular cabin continues to gain market demand across architecture, cultural tourism, residential, and industrial sectors—thanks to its structural advantages, eco-friendly properties, and versatile applications. As consumer expectations for architectural aesthetics and functionality rise, customized triangular cabins have emerged as a growing trend. Designed around families' emotional and practical needs while integrating nature into living spaces, these cabins create warm, inviting atmospheres perfect for gatherings with loved ones—spaces to unwind, connect, and play amidst natural surroundings.





Symbiosis of Angles: The Geometric Poetry and Future Living of Triangular Cabins

Structural Stability & Disaster Resistance

The triangular truss design significantly enhances load-bearing capacity with superior wind/earthquake resistance – ideal for extreme climates and disaster-prone regions.

Spatial Efficiency & Airiness

The pitched roof expands vertical space, while expansive sloped glazing or skylights optimize natural lighting and minimize spatial constraints.

Ecological Adaptability

Angled roofs facilitate solar panel installation and rainwater harvesting, with select designs incorporating green roofs to enhance energy efficiency and

Modular Flexibility & Functional Expansion

Individual units function as standalone studios, vacation cottages or guest rooms, while base-connection configurations create multi-unit compounds for residential, commercial or eco-tourism applications

Rapid Deployment & Cost Efficiency

Prefabricated triangular modules enable factory production with on-site assembly in shortened cycles. The lightweight structure reduces foundation requirements, allowing deployment in mountainous, forested or other challenging terrains.



The Innovative Medium for Cultural Tourism Real Estate

Beyond conventional architecture and cultural tourism applications, triangular cabins are redefining market boundaries through their technical adaptability, cultural symbolism, and social functionality. By embracing cross-disciplinary innovation and precision marketing, these structures are successfully transitioning from "viral phenomena" to "sustainable industry."



House Model: HWSJH-01
House Type: Triangular House (Two-story)

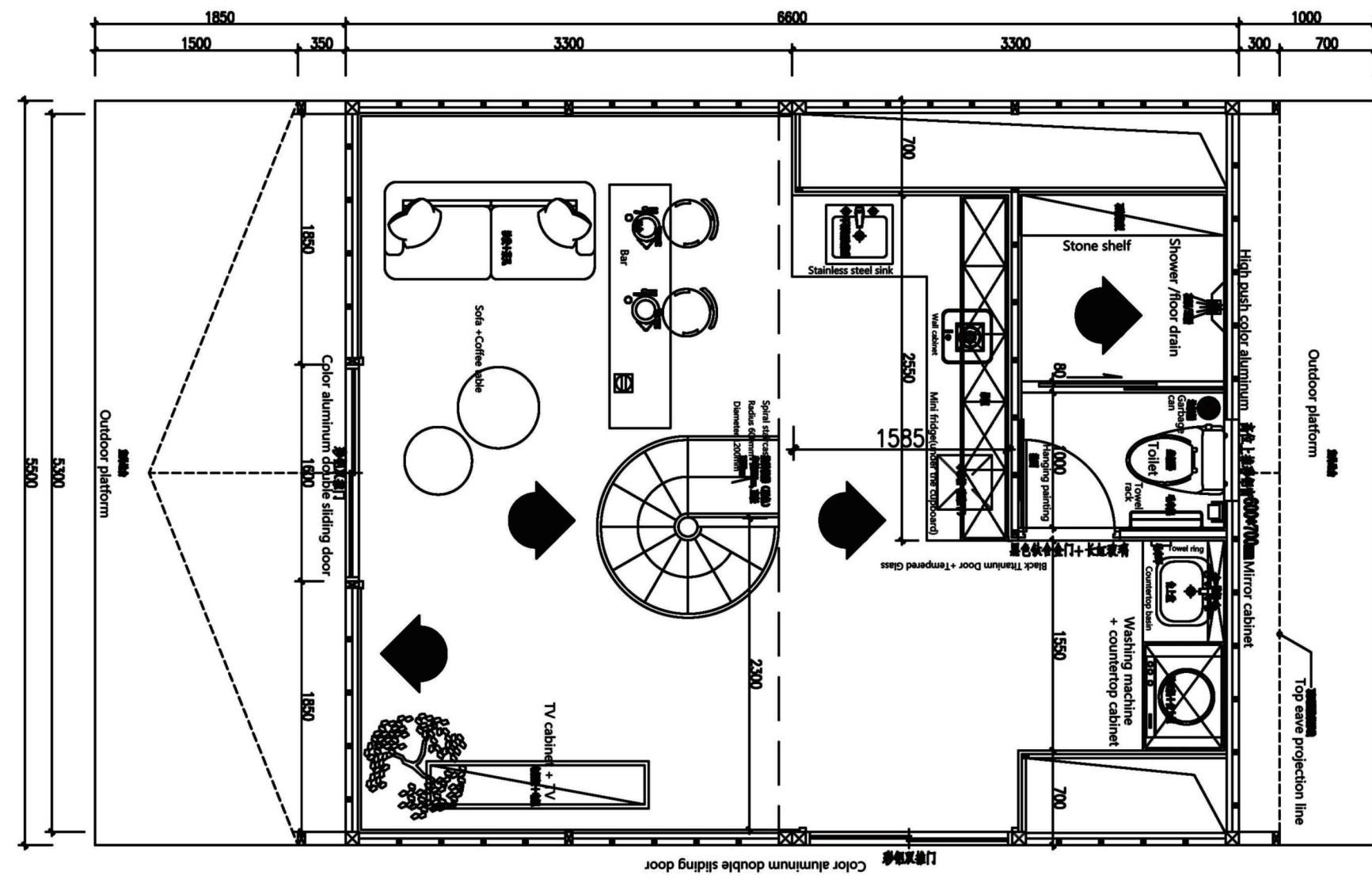


Product Display
HWSJH-01

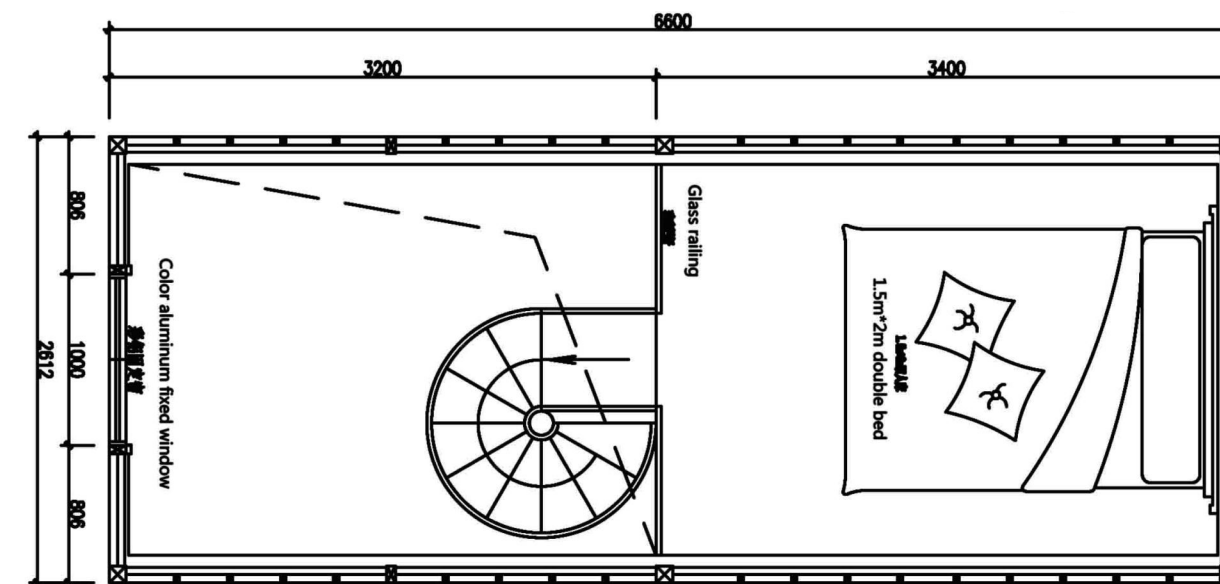


specification sheet

Actual Dimensions		5500*6600*5720mm	
External Dimensions	First Floor	5500*6600*2610mm	
	Second Floor	2612*3400*2520mm	
Internal Dimensions	First Floor	5300*6400*2430mm	
	Second Floor	2412*3200*2308mm	
Main Structure	Light Steel Frame	Galvanized aluminum C-channel steel	
Roof	Decorative Surface	Resin	
	Waterproof Layer	SBS waterproof membrane, self-adhesive on both sides, 2.0mm	
	Structural Layer	High-density cement fiberboard: 9mm thick	
	Eaves	Cement fiber cladding panel, wood grain imitation	
Exterior Wall outside	Exterior Decorative Finish	Cement fiber cladding panel, wood grain imitation	
	Structural Layer	High-density cement fiberboard: 9mm thick	
	Waterproof Layer	One-way breathable membrane (waterproof & vapor-permeable)	
	Soundproofing Layer	Fiberglass wool	
Exterior Wall inside	Structural Layer	High-density cement fiberboard: 9mm thick	
	Decorative Layer	WPC wall panel (non-decorative edges, double-sided)	
Rooms	External Dimensions	Structural Layer	High-density cement fiberboard: 9mm thick
		insulate	Fiberglass wool
		Decorative Surface	WPC wall panel (non-decorative edges, double-sided)
	Internal Dimensions	Structural Layer	High-density cement fiberboard: 9mm thick
		insulate	Fiberglass wool
		Decorative Surface	WPC wall panel (non-decorative edges, double-sided)



1F Floor plan



2F Floor plan

Model Number HWSJH-01	Structural Layer Cement fiberboard, 9mm thick	Decorative Layer WPC fiberboard (no decorative grain)
---------------------------------	--	--



Prefabricated Modular Triangular House

Actual Dimensions: 3200x3700x3300mm (LWH)

Wall Structure: Light steel framing

Insulation: Fiberglass wool

Wall Sheathing: OSB (Oriented Strand Board)

Subfloor: Cement board

Flooring: Laminate flooring

Doors:

Entry wooden door ×1 + Bathroom door ×1

Windows:

Stargazing window ×2 + Bedside window ×1





Interior DecorationModel HWSJH-02

Floor Module:Channel steel + Light steel framing + Steel plate
sealing + PU foam spray

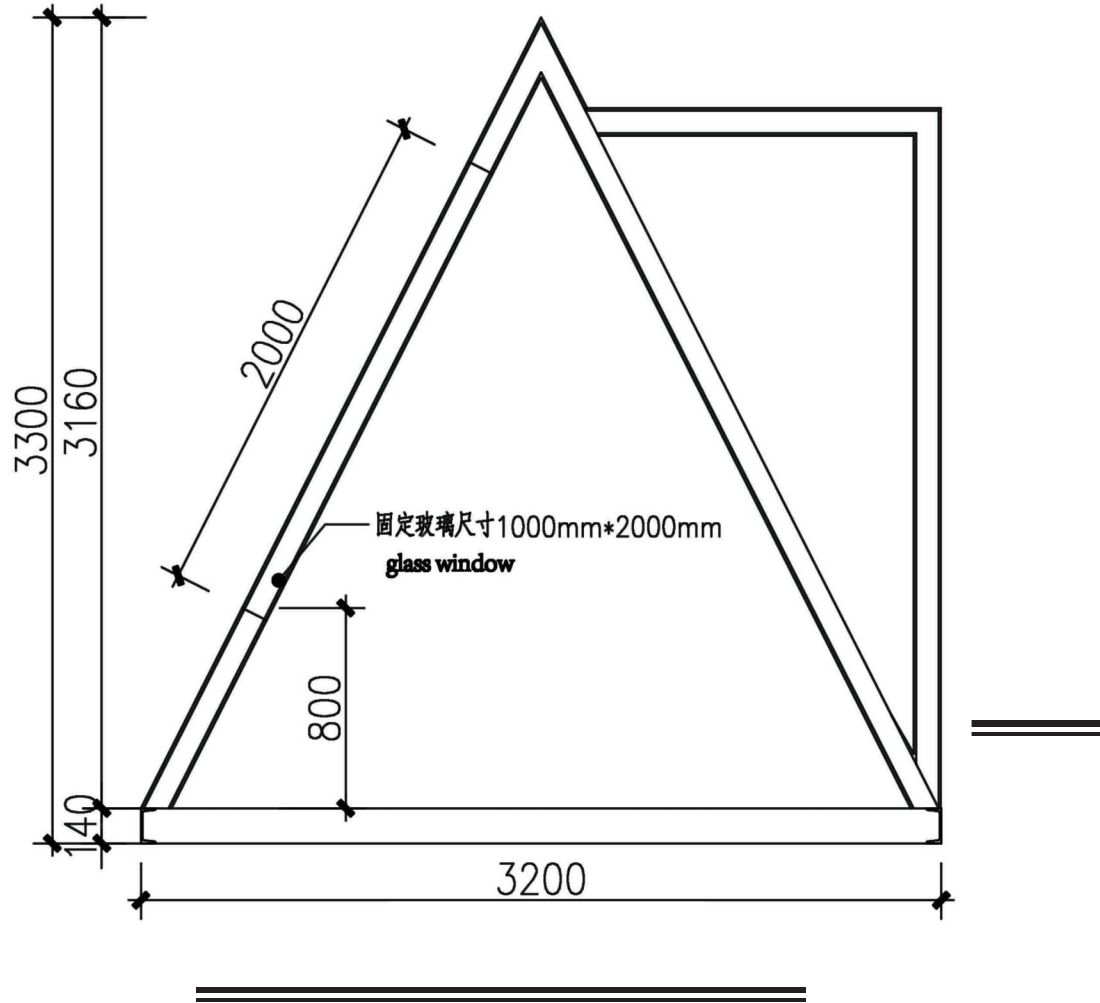
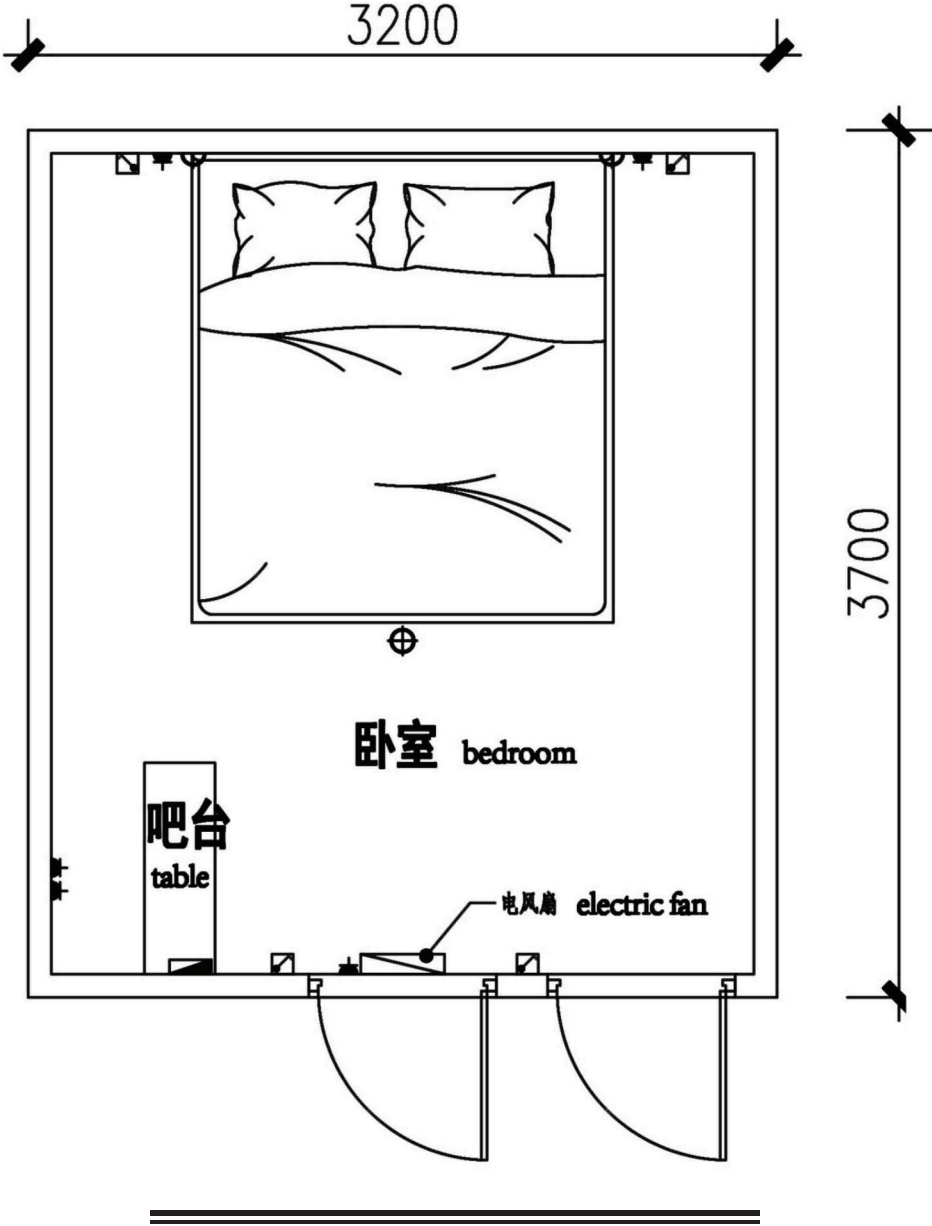
Exterior Cladding:Galvanized steel sheet

Interior Panel:Pine wood

Waterproofing:Breathable membrane

Base Board:Cement board

Electrical System: Power distribution box, Switches, Sockets,
Wiring,Ethernet, ports, Lighting fixtures



Model Number
HWSJH-01

Structural Layer
Cement fiberboard,
9mm thick Decorative Layer

WPC fiberboard
(no decorative grain)

**Black Double-Layer Light
Steel Triangular House
HWSJH-03**





Specifications: 1,000 sq.ft (28' L × 32' W) with Loft

Layout & Features:

Bedrooms: Loft master

bedroom/Bunk bedroom (4-6 person capacity)

Bathroom: Toilet, sink, and shower

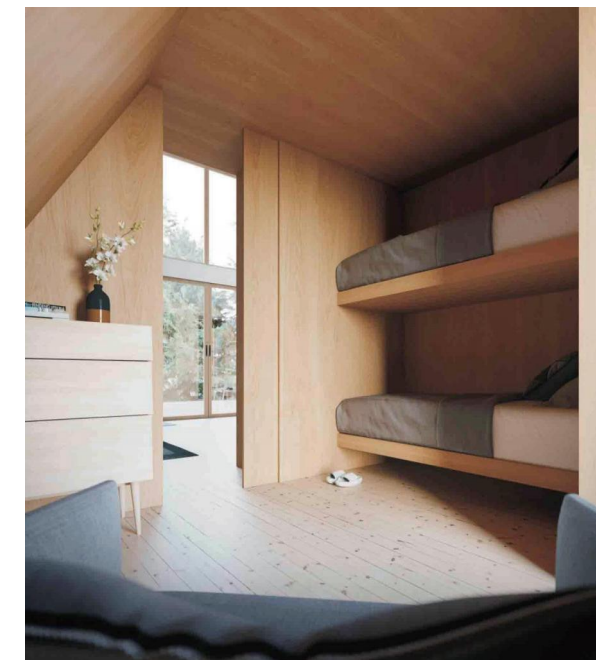
Kitchen: 24" cabinets with sink, Induction cooktop, Refrigerator

Dining Area: Table with chairs

Living Room: Sofa, Coffee table

Laundry: Washer & dryer

Additional Features: Wood/gas stove option
Mini-split HVAC system



Display details
HWSJH-03



Description

Here's a refined translation that maintains the poetic and marketing appeal while ensuring technical accuracy:

This triangular house is a spacious 1,000 sq.ft residence designed for family living.

The loft master bedroom features an exclusive second-level skylight – a rare offering in most triangular homes.

On the main level, the bunk bedroom comfortably accommodates children or friends, creating an immersive nature retreat for weekend getaways.

Modern amenities include: A fully-equipped kitchen, A spa-inspired bathroom, A convertible laundry nook

After outdoor adventures, return to unparalleled comfort, luxury, and relaxation.



**Black Double-Layer
Light Steel Triangular House
HWSJH-03**





Specifications

Dimensions: 415 sq.ft (28' L × 14' W)

Bedroom: Master bedroom (2-person capacity)

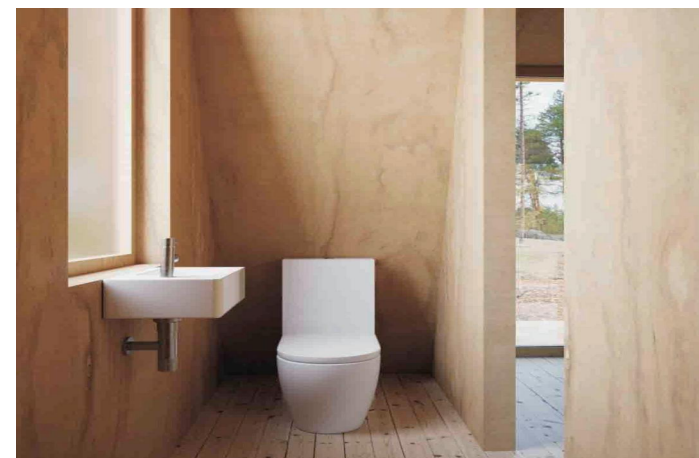
Bathroom: Toilet, vanity, integrated shower stall

Kitchen: 24" base cabinet , Integrated sink, Induction cooktop

Dining Area: Table with chairs

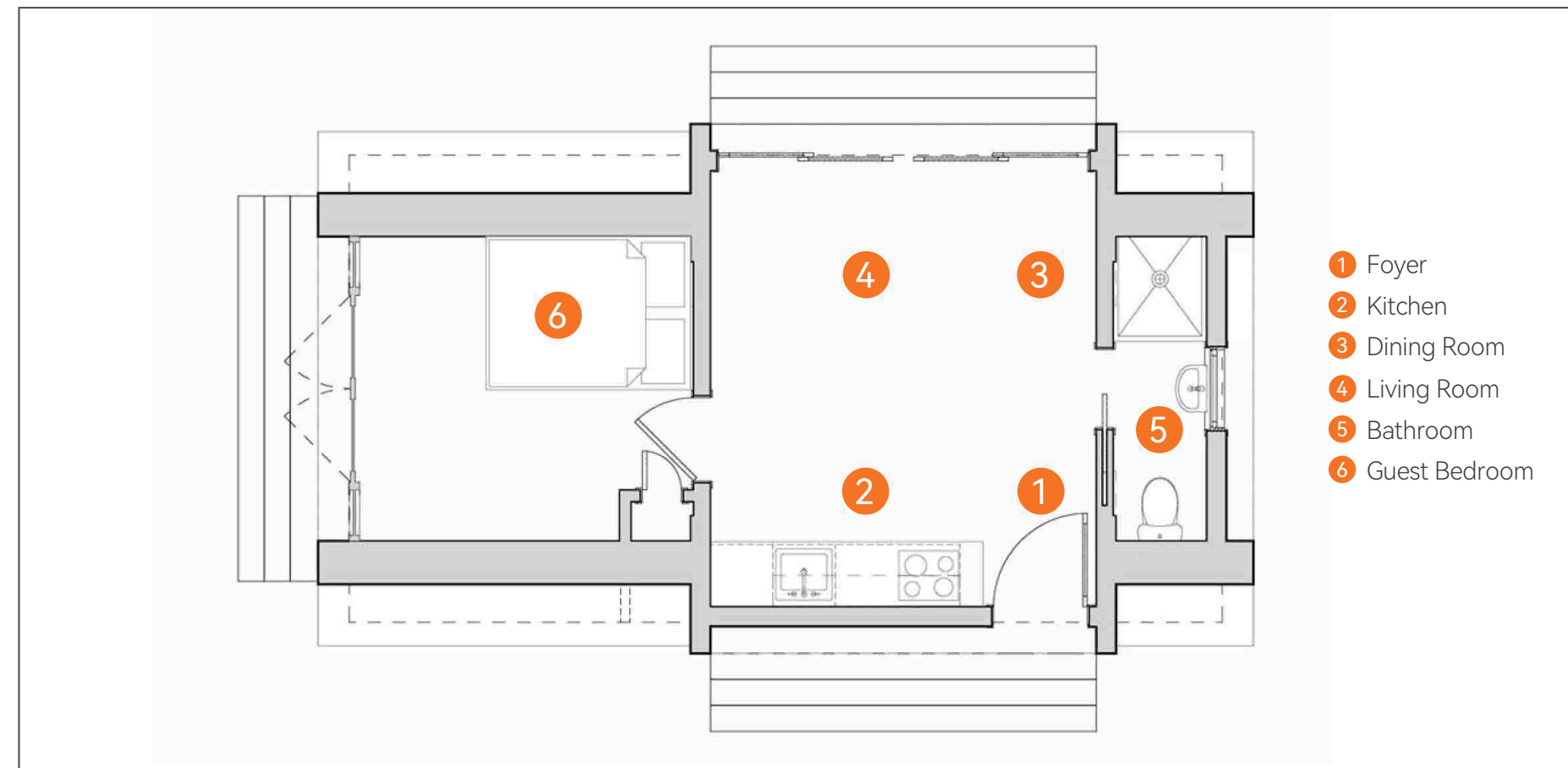
Living Room: Sofa & coffee table

Additional Features: Mini-split HVAC system



Display details
HWSJH-04



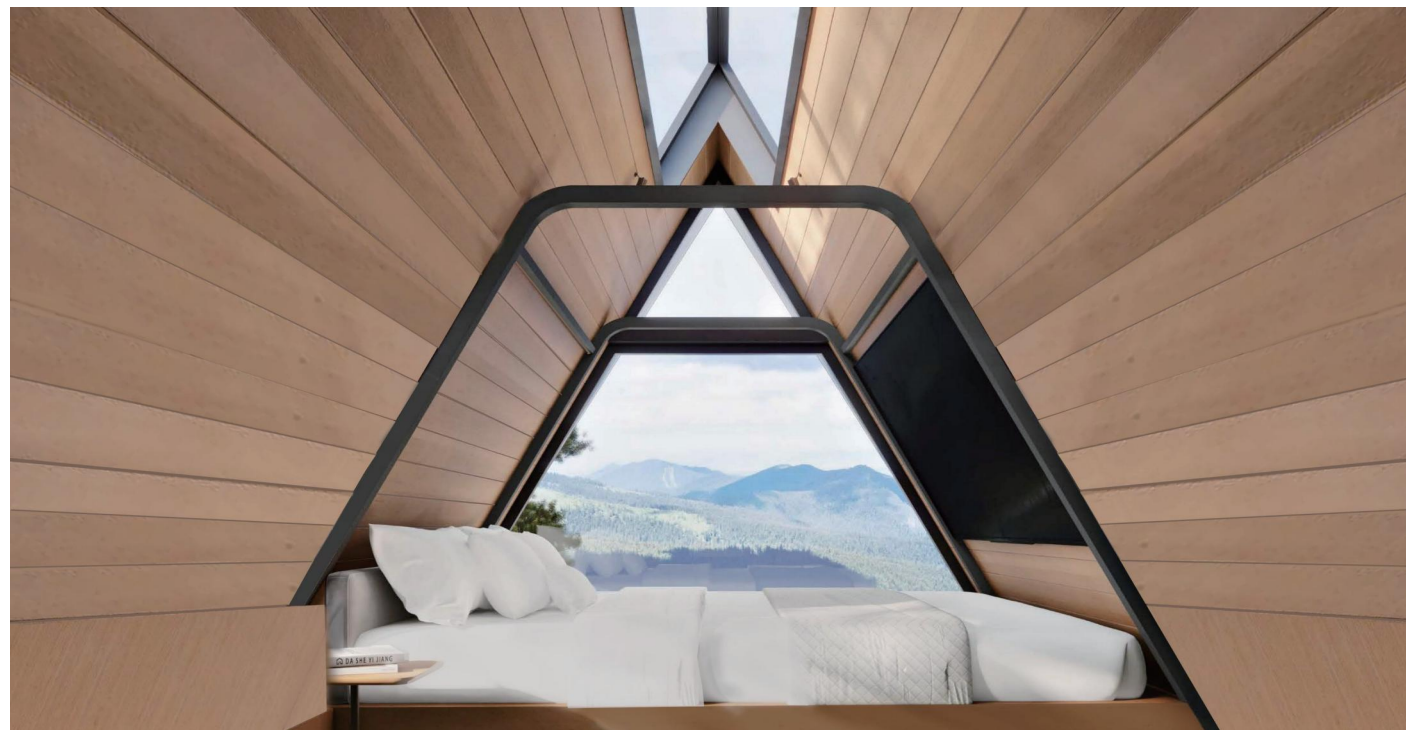


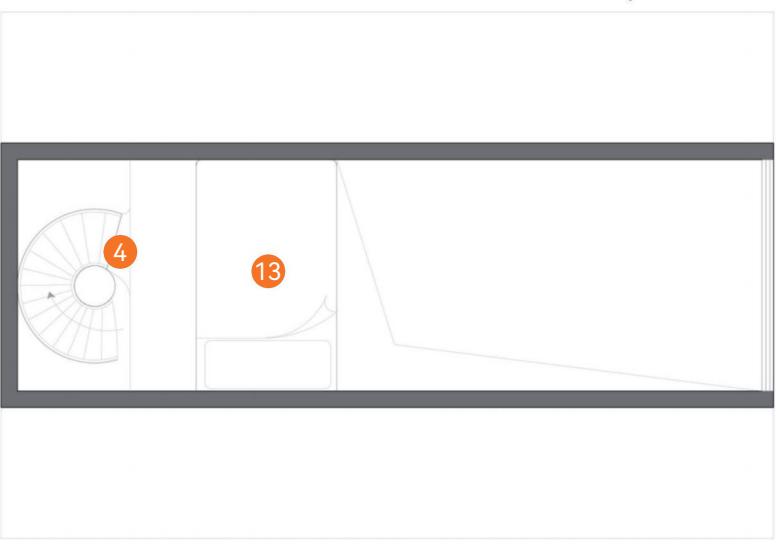
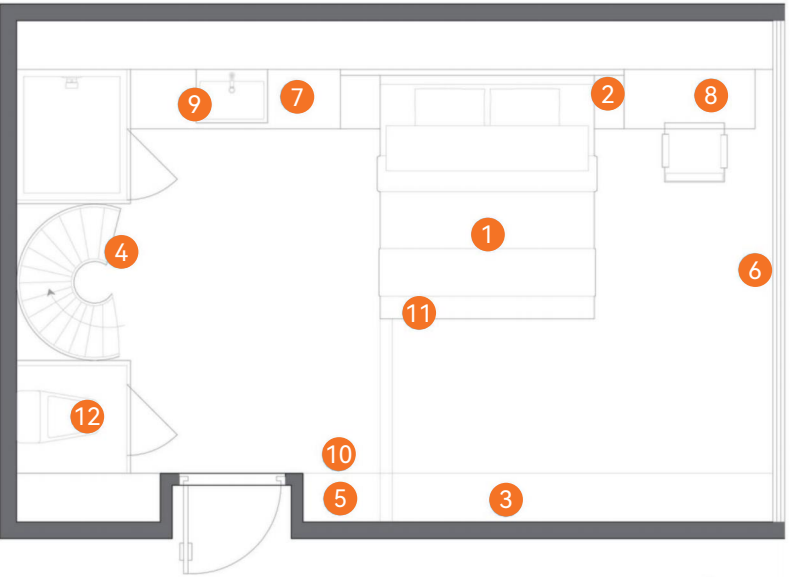
floor plan HWSJH-04

This authoritative A-frame cabin for modern nature explorers features soaring 14-foot ceilings and full-height glazed walls to maximize every square foot. The design innovatively utilizes the iconic A-frame geometry to create: A central living area, Contemporary kitchen, Full master suite, A shower space with unprecedented architectural impact.

Key Highlights: Vertical Space, Optimization through steeply pitched rooflines, Seamless Indoor-Outdoor Connection via panoramic glazing, Signature A-Frame Moment in the geometrically dramatic shower

Vacation Villa





- | | | | | |
|------------------------------|----------------------|-------------------|---------------------|------------------------|
| 1 1.8m bed (Queen/King size) | 4 Staircase | 7 Bathroom vanity | 10 Air conditioning | 13 1.2m children's bed |
| 2 Nightstand | 5 Wardrobe | 8 Desk | 11 Bathroom | |
| 3 Television | 6 Motorized curtains | 9 Washbasin | 12 Toilet | |

floor plan



specification sheet			
specifications	7(L)*4.5(W)*6(H)m		
System Components	Project	C-1	C-2
Main Structure	Structure	Steel frame structure	Steel frame structure
	Exterior decoration	Aluminum-magnesium-manganese	Aluminum-magnesium-manganese
	Insulation layer, insulating material	14kg/m3*100mm, FSK	14kg/m3*100mm, FSK
	Window	LOW-E glass insulated aluminum windows	LOW-E glass insulated aluminum windows
	Door	Entrance door, steel door, bathroom door, narrow-frame glass door	Entrance door, steel door, bathroom door, slim-frame glass door
Finishes	Ceiling	WPC Panel	Bamboo-wood fiberboard
	Wall surface	WPC Panel	Bamboo-wood fiberboard
	Floor	SPC flooring	Multi-layer wooden flooring
	Lighting	Light strip + downlight	LED strip lights + downlights
	Curtain	Electric curtains	Motorized curtains
	Plug, switch	European standard	European standard
Bathroom Suite	Toilet	European standard	Automatic smart toilet / European standard
	Shower	European standard	European standard
	Bathroom cabinet	European standard	European standard
	Faucet	Artificial stone countertop, paint-free wood grain	Artificial stone countertop, paint-free wood grain
Appliances	Air conditioner	Can be locally sourced if needed	Can be procured locally if required
	Water heater	Can be locally sourced if needed	Can be procured locally if required
Smart Home System	Intelligent access control	-	Keypad + card access
	Background music	-	Included
	Fire alarm system	Included	Included
Furniture Package	Bed & bedside table	-	Bed: Solid wood Nightstand: Paint-free wood grain
	TV	-	Included
	Wardrobe	-	Paint-free wood grain
	Table	-	Paint-free wood grain
	Office chair	-	Included
	Single sofa	-	Included
	Double sofa	-	Included
	Coffee table	-	Included