



A share main board listed company  
Stock Code:605318



OFFICIAL WEBSITE



ALIBABA SITES

**FSILON HOME BUILDING MATERIALS CO.,LTD.**

No.5888,Wuyuan Road,Haiyan County, Jiaxing City,Zhejiang Province, China

**860573-86598806**

[http:// fsl-bm.com](http://fsl-bm.com)

[sales@fsilon.com](mailto:sales@fsilon.com)



**FSL Container House /  
Expandable House**



## ABOUT US

Fsilon has been deeply rooted in the home building materials industry since its founding in 2005. With two decades of expertise, the company proudly debuted on the Shanghai Stock Exchange A-share Main Board (Stock Code: 605318) in August 2020. As a pioneer and leader in the industry, Fsilon is an eco system-driven industrial enterprise integrating product R&D, supply chain empowerment, personalized customization, and turnkey project delivery.

Headquartered in Haiyan, Zhejiang, the company operates across a 260,000+ sqm campus, with its business spanning diverse sectors such as: Cultural tourism facilities, Public welfare projects, Mobile commercial solutions, Municipal infrastructure, Rural revitalization, Military, medical, and beyond. Through independent innovation, Fsilon has introduced cutting-edge, highly customizable products, including: All-terrain adaptable "Space Capsule" and "Apple Capsule" units Modular prefabricated buildings.

Empowered by professional excellence and innovative spirit, Fsilon fuels dynamic growth across industries.





# DRIVEN BY INNOVATION PRODUCT UPGRADES DOUBLE IN VALUE

From manufacturing to intelligent manufacturing, Fsilon has been practicing the development concept of "innovation" all the way, providing core protection for the long-term prosperity of the enterprise.



Type:Utility model patent  
Code: ZL 2018 2 0672567



Type:Utility model patent  
Code:ZL 2016 10078197.X



Type:Utility model patent  
Code: ZL 2018 2 0680433.X



Type:Utility model patent  
Code:ZL 2018 2 0216448.0



Type:Design Patent  
Code:ZL 2018 3 0194369.X



Type:Design Patent  
Code:ZL 2018 3 0160744.9



Type:Design Patent  
Code:ZL 2018 3 0161029.7



Type:Design Patent  
Code: ZL 2018 3 0160743.4



Type:Design Patent  
Code:ZL 2018 3 0161027.8



Type:Design Patent  
Code:ZL 2018 3 0194508.9



Type:Design Patent  
Code:ZL 2018 3 0194550.0



Type:Design Patent  
Code:ZL 2018 3 0194531.8



Type:Design Patent  
Code: ZL 2018 3 0194383.X



Type:Design Patent  
Code:ZL 2018 3 0194561.9



Type:Design Patent  
Code:ZL 2018 3 0194304.5

# PREMIUM PRODUCTS

Define industry-leading standards and forge a quality FSILON



Report NO.DX20191989



Report NO.DX20200935



Report NO.DX20200803



Report NO.DX20200235



Report NO.DX20200738



Report NO.DX20201149



Report NO.DX20201153



Report NO.DX20200936



Report NO.WTN2020-0813



Report NO.DX20200236



Report NO.DX20202210



Report NO.DX20200621

Fsilon has the strength of a first-line brand in the industry, far surpassing many brands in the industry in terms of product research and development, design, and manufacturing levels. Driven by technological innovation and focusing on improving the "internal strength" of products, the spirit of craftsmanship and the pursuit of excellence in quality are reflected in every detail, from the selection of auxiliary materials, manufacturing processes, power optimization to product performance.

# CATALOGUE

## Fsilon Make Space Smarter Provide Prefabricated Materials and Modular Solutions

In recent years, the upsurge of container modification has been in full swing. More and more people are getting involved in it, building their own container villas with extremely limited budgets.As important innovative forms in the field of modern architecture, the market prospects of prefabricated container houses and expandable houses are driven by policies, technologies, environmental protection requirements and diverse application scenarios,showing strong growth potential.



Flexible Living Space – Container House



Every side Looks Good – Expandable House

# CONTAINER HOUSE



## Small yet Beautiful Container Residences Industrial Style Can Also Be Very Cozy

Container houses are gradually entering people's lives, bringing a different living experience.

In terms of appearance, container houses have a unique metallic texture and sharp lines.

Paired with a cozy interior, they are simple yet stylish.



## New Design of Outdoor

### Architecture

### Fsilon Green Container House

### Construction

Container house construction is a new type of building in recent years.

It belongs to steel structure and prefabricated buildings, as well as modular buildings and green buildings.

It has diverse functions, can meet various functional requirements, has a wide range of uses, and can be built into container mobile hotel residences, commercial districts, exhibition reception areas, creative science and technology innovation parks, etc.







## Environmentally Friendly and Low-Cost The Path of Residential Innovation for Container Houses

### Low-carbon and environmentally friendly, green economy

Since the process of constructing container buildings can be integrated and prefabricated in factories, the resulting construction waste can be controlled and treated, resulting in relatively less environmental pollution on-site. Moreover, by making good use of the mobility of container houses, they can be utilized or recycled at multiple locations to a greater extent. After being used, they can be transported to another site for assembly and reused multiple times, thus minimizing the investment cost.

### Shorten the construction period and simplify the approval process

Container houses can achieve overall planning and prefabrication in factories, saving time and costs. They are especially suitable for real estate as temporary container sales offices, reception centers, and showrooms. They are also suitable for rapid construction in scenic areas, commercial street openings, hotel establishments, and so on.

### Good decorative effect and diverse styles

Container houses can not only be used as construction site housing or for logistics transportation, but also create different high-end effects with the help of different decorative materials.

## Clever Combination to Create an Ideal Dwelling

Building container houses requires the use of modern technology for intelligent design, modular production, and foolproof assembly. New technologies such as solar energy, light energy, wind energy, and air energy can be combined with container houses to create comfortable and functional residences.

# CONTAINER HOUSE

## STEEL FRAME

Material	SGH440
Surface treatment	Hot dip galvanized + spray coated
Frame Color	Red, Blue, Medium grey, White grey

## ROOF&FLOOR

Roof panel	Integral moulded PU foam (CTR-F)
Roof panel thickness	60mm/70mm
Floor cushion board	18mm thickness cement fiber board,calcium silicate board
Floor decorative panel	1.8mm/2.5mm (bathroom) thickness PVC

## WALL PANEL

Core material	TPS, PU, Rockwool
Thickness	50mm/75mm/100mm

## ELECTRICITY

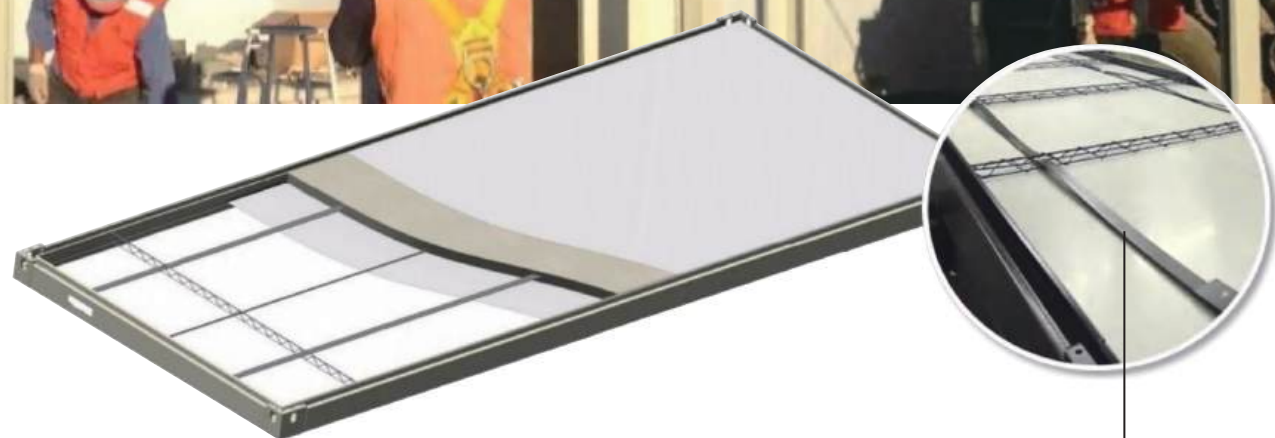
Electricity standards	IEC , CE, UL
-----------------------	--------------







- ✓ Never leak
- ✓ Excellent insulation
- ✓ Fast installation
- ✓ Long lifespan
- ✓ Organized drainage with
- ✓ Downpipes in corner columns



Flat and long steel bar, Increase the structural strength of the container roof

## CONTAINER ROOF LOAD-BEARING TEST



Container Roof 0.75T  
Load-bearing Test







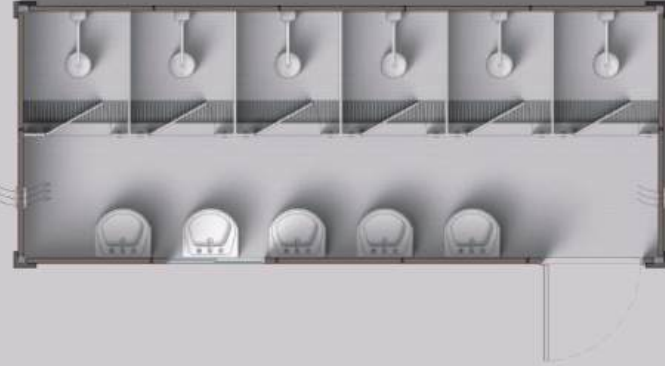

Container Roof 1.5T  
Load-bearing Test



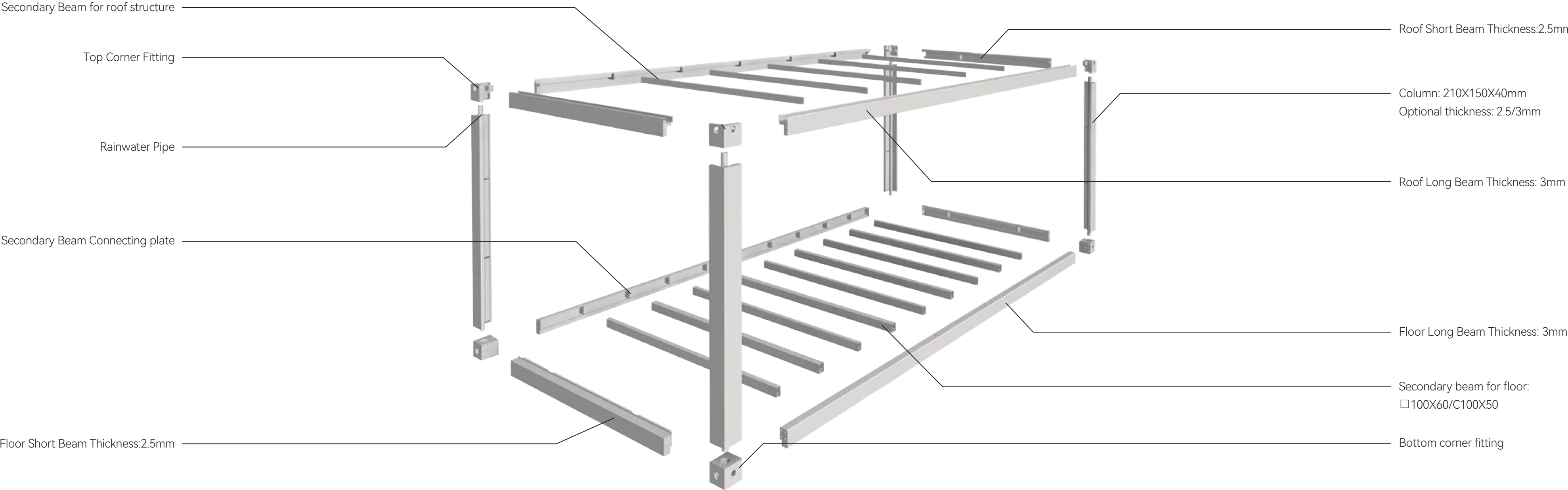




Optional styles

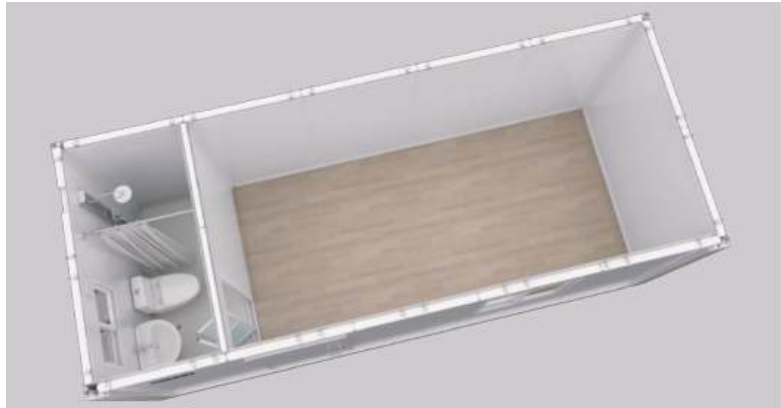
	<p>length: 6000/6058mm width: 2438mm Height: 2591/2791/2991mm</p> <p>A</p>		<p>length: 6000/6058mm width: 2438mm Height: 2591/2791/2991mm</p> <p>B</p>		<p>length 6000/6058mm width: 2438mm Height: 2591/2791/2991mm</p> <p>C</p>
	<p>length: 6000/6058mm width: 2438mm Height: 2591/2791/2991mm</p> <p>D</p>		<p>length: 6000/6058mm width: 2438mm Height: 2591/2791/2991mm</p> <p>E</p>		<p>length: 6000/6058mm width: 2438mm Height: 2591/2791/2991mm</p> <p>F</p>





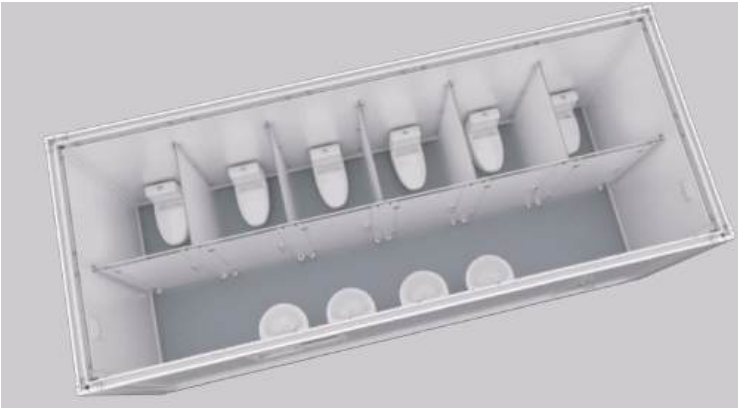


DETACHABLE  
CONTAINER HOUSE



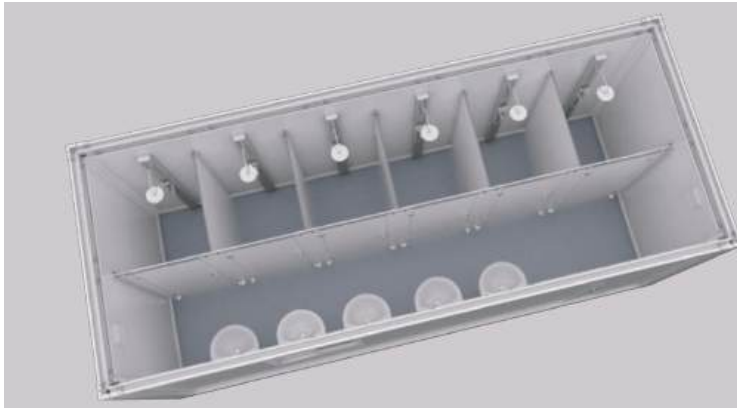
length: 6000mm  
width: 3000mm  
Height: 2591/2791/2991mm

B



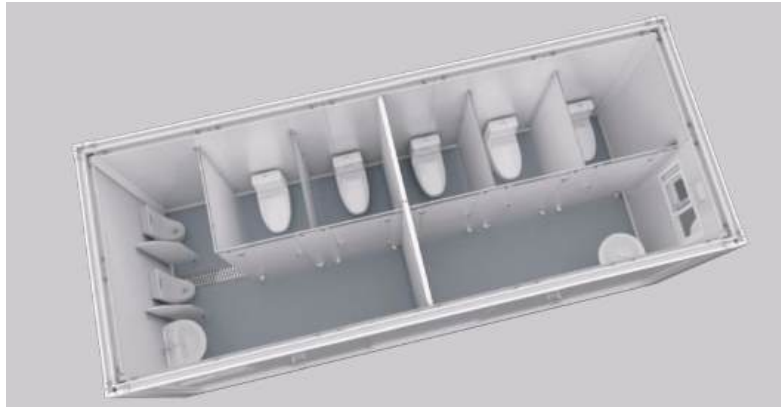
length: 6000mm  
width: 3000mm  
Height: 2591/2791/2991mm

C



length: 6000mm  
width: 3000mm  
Height: 2591/2791/2991mm

D



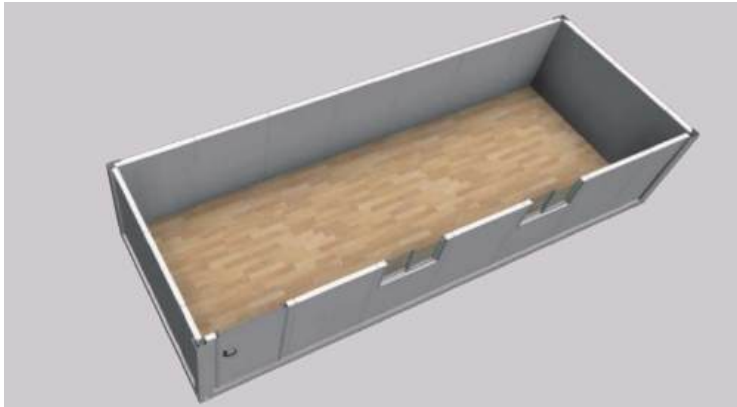
length: 6000mm  
width: 3000mm  
Height: 2591/2791/2991mm

E



length: 6000mm  
width: 3000mm  
Height: 2591/2791/2991mm

F



length: 6000/6058mm  
width: 2438mm  
Height: 2591/2791/2991mm

G





Combined container house with wood grain decorative surface



## Case Effect Display

series container house  
Combined container house with stairs







## Qatar World Cup Fan Village

I Location: Doha, Qatar  
 I Product Type: CTR-D series  
 I Scale: 5200 sets  
 I Usage: World Cup Fan Village, including dormitory, restaurants, shops, toilets, receptions, etc.



## Guadeloupe Container House Rental Resort

Location: Saint-Francois, Guadeloupe  
 I Product Type: CTR-DH  
 I Scale: 6 units  
 I Usage: Resort





## Free-Assembly Detachable Containers In New Zealand

I Location: New Zealand  
I Product Type: CTR-D series  
I Scale: More than 50 sets  
I Usage: Residential/Office, etc.



## Guyana Hospital Supporting Container

I Location: Guyana  
I Product Type: CTR-F series  
I Scale: 76 sets  
I Usage: Guyana Hospital ancillary facility: container office, guard room, kitchen&dinning room







## Mozambique Canteen And Accommodation

I Location: Mozambique  
I Product Type: CTR-F  
series  
I Scale: 105 sets  
I Usage: Hotel canteen  
and accommodation



## ◀ Camp Accommodation, In PNG

I Location: PNG  
I Product Type: CTR- FA & CTR- FB  
I Scale: 3 buildings  
I Usage: Camp accommodation



## Guadeloupe ▶ Container Toilet

I Location: Sainte-Anne, Guadeloupe  
I Product Type: CTR-D series  
I Scale: 7 units  
I Usage: Toilet





# PrefabX SPD

 **Rapid installation**  
8-hour assembly

 **Wind load capacity**  
3.0kn/m<sup>2</sup>

 **Snow load capacity**  
1.5kn/m<sup>2</sup>

 **Seismic resistance**  
Grade 9

 **Fire resistance**  
Grade 3 (0.5 hours)

 **Soundproofing**  
≥60db

 **Service life**  
50 years

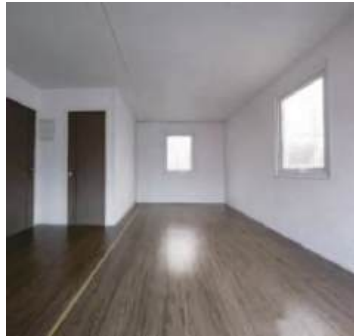






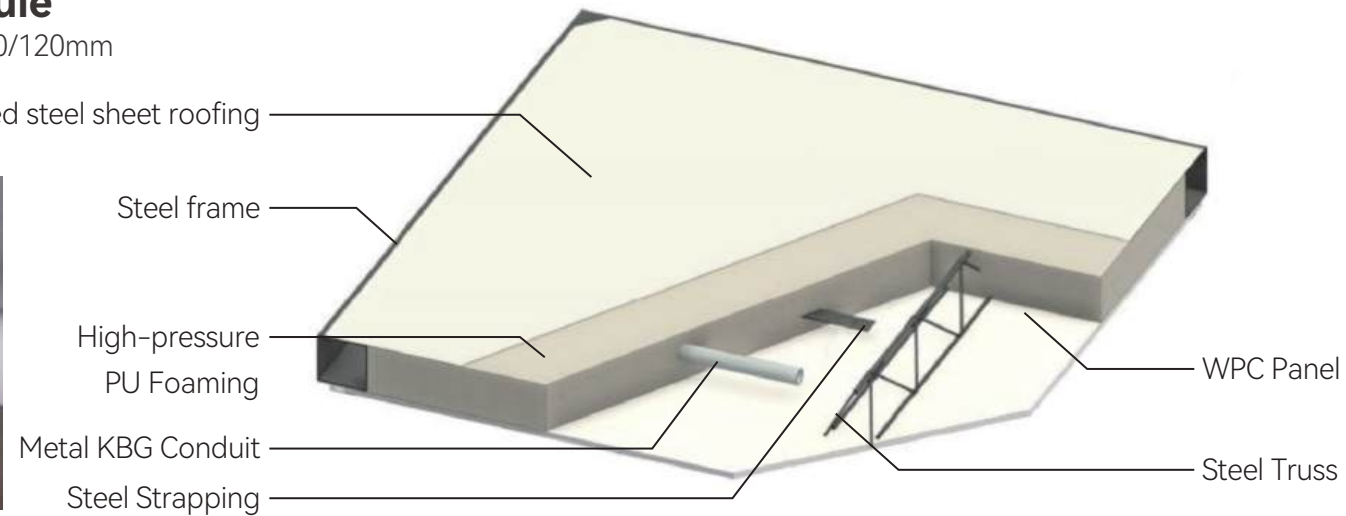
## Floor Module

Overall thickness: 100mm



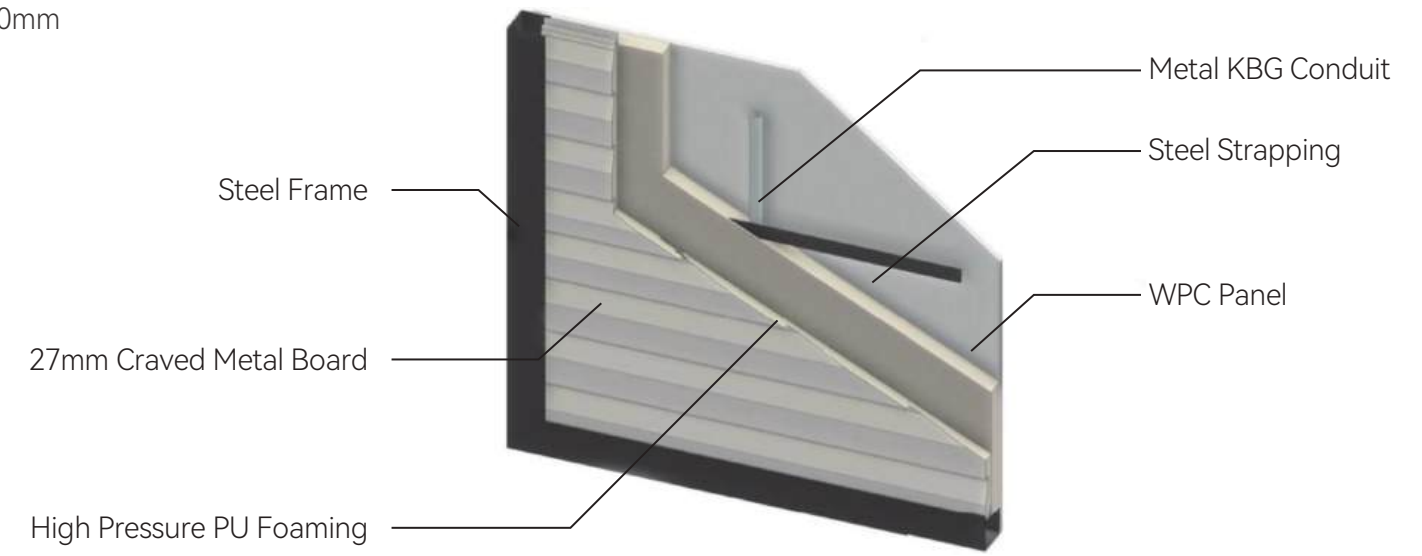
## Ceiling module

Overall thickness: 90/120mm



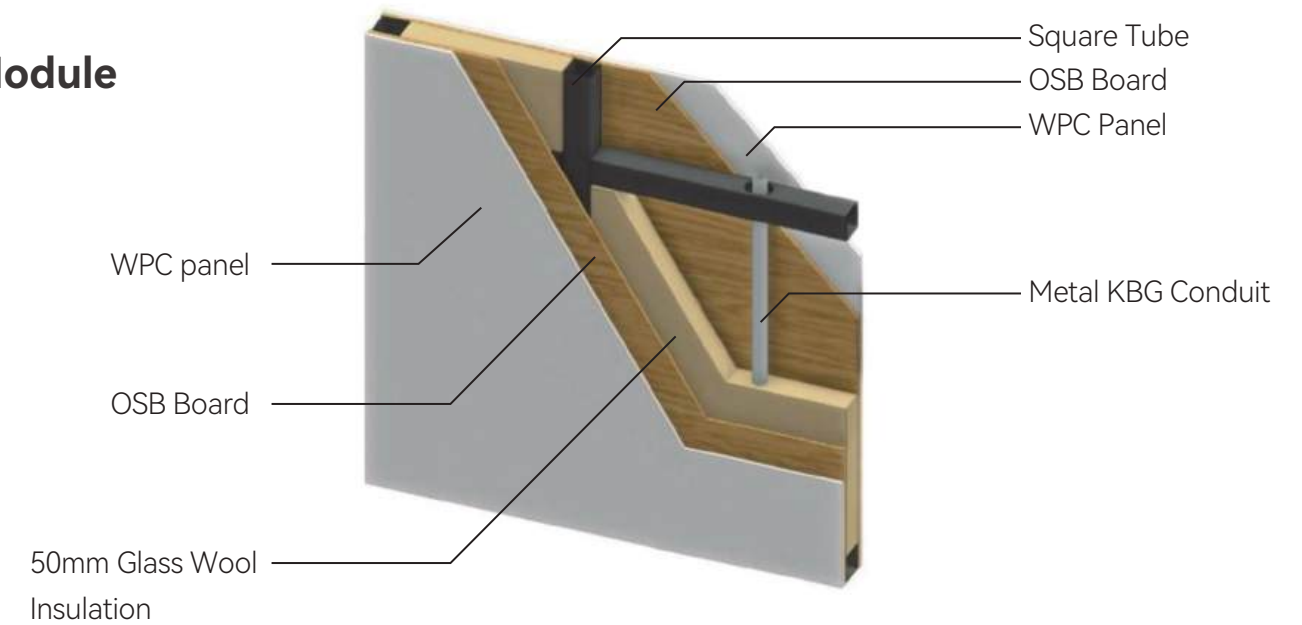
## Exterior Wallboard Module

Overall thickness: 85/120mm



## Interior Wallboard Module

Overall thickness: 86mm



# EXPANDED ROOM

## The Composite Application of Space and Function: An Infinite Dialogue in "Expansion"

The expansion room is like a spatial magician, weaving the boundaries of freedom with ingenuity and careful thought.

It may be like a nomadic tent, stretching its "bones", chasing the light of the sky and the shadows of the clouds between folding and extending.

Or it may be like the silently growing root system in the texture of architecture, quietly opening up a world of its own through the "breathing" of ceiling height and layout.

Whether it is the steel skeleton dancing lightly on the wasteland or the folding philosophy hidden in the jungle of bricks and tiles, all are whispering: The poetry of space is never confined to compasses and rulers, but lies in how to let every inch of time dwell comfortably and richly.





## The "Transformers" in the housing world: Save time and effort.

The expansion room is a highly flexible and deformable living space. Through the folded structure design, it can achieve efficient contraction and expansion of space, and has the advantages of rapid deployment and portability. Its core features include:



### Foldable and Telescopic Design

Mechanical structures such as hinges and sliding rails are adopted. Walls or roofs can be folded and stored. During transportation, the volume can be compressed to 1/3 - 1/2 of that of traditional houses, greatly reducing logistics costs.



### Rapid Deployment Capability

After being unfolded, there is no need for complex construction. Functional spaces (such as bedrooms, bathrooms, and kitchens) can be completed within a few hours, which is suitable for emergency rescue and disaster relief or temporary living needs.



### Modularity and Multi-functionality

It supports single use or horizontal combination of multiple units. Some designs are equipped with adjustable partitions, enabling free switching among living, office, and storage scenarios.



### Lightweight and Energy-saving

The main body is made of light and high-strength materials such as aluminum alloy and composite materials. Some are integrated with photovoltaic panels or insulation layers to balance mobility and energy efficiency.



### Policy Adaptability

Due to its characteristics of being quickly dismantled or relocated, in some cities, it can avoid the approval restrictions of fixed buildings and be flexibly used as a temporary accessory unit.





# House selection





► House Type: HWTZH-01

specification sheet		
Code	L20	L20
open size(L/W/H)	5960*6700*2548mm	5960*7094*2268mm
closed size(L/W/H)	5960*2300*2548mm	6058*2438*2896mm
Indoor ceiling height	2350mm	2500mm
Floor area	39.8m²	42.3m²
Net indoor area	36.8m²	39.3m²
Exterior wall thickness	85mm	85mm
Roof slab thickness	90mm	90mm
R-value	20	20
Packaging	2 sets in 40HC	SOC





► House Type: HWTZH-02

specification sheet		
Code	L20	L20
open size(L/W/H)	5960*6700*2548mm	5960*7094*2268mm
closed size(L/W/H)	5960*2300*2548mm	6058*2438*2896mm
Indoor ceiling height	2350mm	2500mm
Floor area	39.8m²	42.3m²
Net indoor area	36.8m²	39.3m²
Exterior wall thickness	85mm	85mm
Roof slab thickness	90mm	90mm
R-value	20	20
Packaging	2 sets in 40HC	SOC





► House Type: HWTZH-03

specification sheet	
Code	L20
open size(L/W/H)	5960*4390*2548mm
closed size(L/W/H)	5960*2300*2548mm
Indoor ceiling height	2350mm
Floor area	26.1m²
Net indoor area	24.1m²
Exterior wall thickness	85mm
Roof slab thickness	90mm
R-value	20
Packaging	two sets in 40HC





► House Type: HWTZH-04

specification sheet

Code	H20
open size(L/W/H)	7094*11940*2698mm
closed size(L/W/H)	6058*2438*2896mm*2
Indoor ceiling height	2500mm
Floor area	84.7m <sup>2</sup>
Net indoor area	78.6m <sup>2</sup>
Exterior wall thickness	85mm
Roof slab thickness	90mm
R-value	20
Packaging	SOC





# SPD Installation Process

Domestic exclusive product, with appearance patents, invention patents





## Configuration

1

### Glass Shower Room

SPD-A: Width 1276mm\*Height 2000mm  
SPD-E: Width 1466mm\*Height 2000mm

2

### Bathroom Sink

Entire length 1280mm, basin width 422mm

3

### Toilet

Vertical toilet

4

### Bathroom Cabinet

Length 430mm\*Width 390mm\*Height 770mm





Effect display







## TRANSPORTATION AND INSTALLATION







## REAL SCENE DEMONSTRATION

